

inground container **URBIN**

crane collected • 500 to 5000 liters capacities



Characteristics

- 40 MPa concrete support slab
- High resistance to weather and impacts
- Double layered wall offers high resistance to soil displacement caused by freezing and thawing pressure (up to 97 kPa.)
- Will never rust
- Quieter than a steel container
- Easy to handle heavy-duty bag
- Ergonomic cover tested for 150 kg loads
- Quick and easy to install
- Urbin's design matches all architectural and landscaping styles

The URBIN...

... is a buried double layered cylindrical polyethylene container, covered with wood-alike plastic slats (made of 50% recycled materials), belted with two aluminum finishing strips and crowned with an ergonomic polyethylene cover.

The collected materials are contained in a heavy duty vinyl bag or a rigid container (optional) that is easy to manipulate and empty using the proper lifting equipment with an articulated arm or a crane.



a division of

DURABAC

www.durabac.net
1 800 565.1723

Semi-buried containers

For waste or
recyclable material

Surface containers

For waste, organics, recyclables
and clothing



Installation is quick, easy and permanent...

The URBIN: a sustainable and aesthetic choice

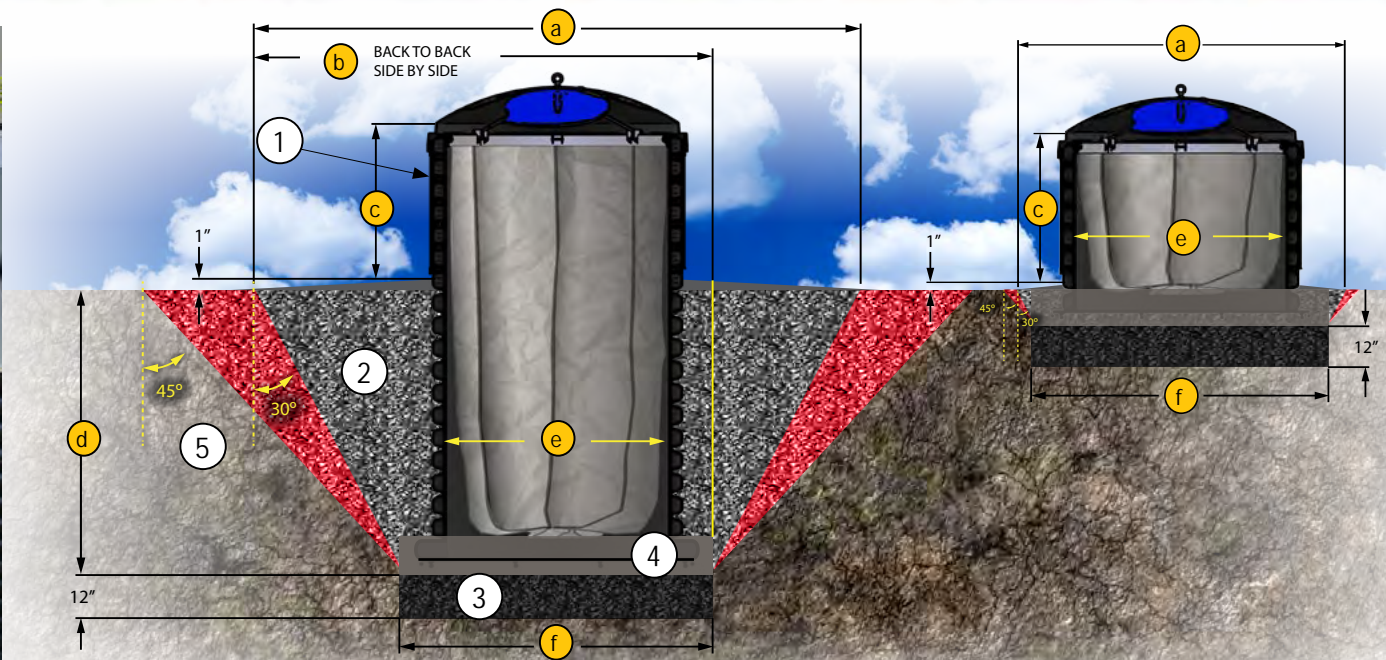
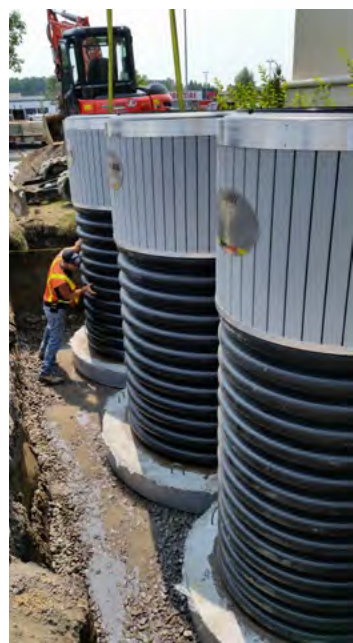
BLENDS WITH EVERY SCENERY: A wide range of colors or custom coatings will suit all architectural styles.

MAXIMIZE SPACE: More than twice the capacity of regular (above ground) containers taking up the same surface area. The container's depth also encourages natural compaction through gravity.

ODOR CONTROL: Collected matter is maintained at a cooler temperature, reducing the growth of bacteria and therefore, unpleasant odors.

The concrete support slab, poured in and around the container's base, over steel rebar, offers better stability, durability and leak protection.

The double layered tank unique to Urbin, smooth on the inside and ribbed on the outside, offers the industry's best resistance against lateral soil pressure during compaction or movement caused by the freezing and thawing of the ground.



MEASURES	CSEG-5000	CSEG-3000	CSEG-1300	CSEG-800	CSEG-2000C	CSEG-1000C	CSEG-500C
a	169"	149"	137"	130"	94½"	74½"	59½"
b	126½"	106½"	94½"	87"	--	--	--
c	42"	42"	42"	42"	42"	42"	42"
d	75"	75"	75"	75"	--	--	--
e	59½"	42"	30"	24"	59"	42"	30"
f	84"	64"	52"	44"	84"	64"	52"

- 1 Above ground covering is made of solid and durable plastic slats (simulated wood finish)
- 2 Filler (Class A - crushed stone, gravel or sand depending on availability) compacted in 12" layers
- 3 Footing (12" MG-20b)
- 4 Concrete support slab
- 5 Excavation angle depends on soil type and condition

A container suited for your environment ...



Cover for regular waste



Covers for recyclable materials



Cover for clothing donations



Optional lock

...built to meet your needs !



OPTION

Catch basin The optional catch basin keeps excess liquid from pooling at the bottom of the tank. Ideal for organic waste.



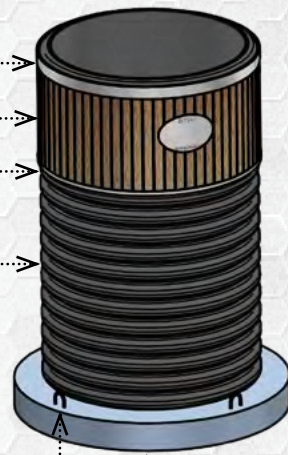
OPTION

Rigid bag The rigid collection bag (optional) can replace the vinyl collection bag for certain applications. It is stronger than the standard bag and withstands sharp objects.



Have complete control of your image! Full surface color printing is available to promote your logo or your message.

Strive for perfect harmony! A 360° custom wrapping, aluminium or other material, will mesh perfectly with your surroundings.



- Aluminum band (top and bottom of plastic slats).
- Vertical plastic slats, individually fixed with stainless steel screws.
- Double-layered HDPE walls, with 40% recycled materials with a resistance of:
 - 140 kPa (20 PSI) CSE-3000
 - 97 kPa (14 PSI) CSE-5000
- 4 round 5/8" iron lift hooks, total capacity 2568 kg (5661 lb) (SF = 3:1)
- Pre-cast, reinforced 40MPa (5802 PSI) concrete base.

- Galvanized steel eyelets for lifting
- Impact resistant polyethylene main lid, temperature tolerances from -40°C to +40°C, withstands up to 150 kg (331 lb)
- Double-layered secondary lid, for users
- 4 polyester lift straps each with a 1814 kg (4000 lb) lifting capacity
- Galvanized steel bag supports (2" x 3" x 1/4" angle iron)



- Bag and cable ties have a working capacity of 1 250 kg (2756 lb) (SF = 6:1). The bag material can be easily repaired.
- Cable tie storage pocket.
- Liquid resistant cable tie with security mechanism.